

TD-*n*HL

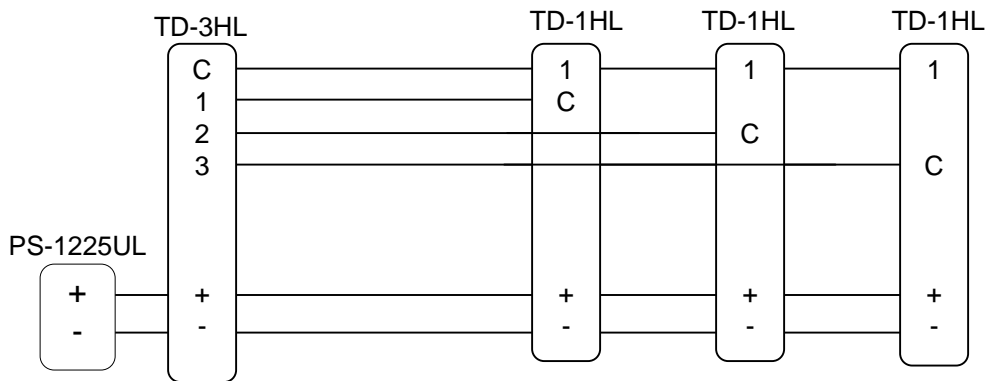
TD-H Handsets with LED and Call Tone Switch

Available units: TD-1HL, TD-3HL, TD-6HL, TD-12HL

- INSTRUCTIONS -

The TD-H system provides selective calling and communication between handsets. The TD-HL series includes an LED indicator for an incoming call, and a switch to turn the call tone on or off. These additional features are ideal for radio stations, sound booths, or other applications where visual indication of a call is required.

WIRING DIAGRAM EXAMPLE:



NOTES:

- CALL LED:** When the TD-3HL calls any of the TD-1HL units, the LED will light. The LED will only stay lit as long as the person at the TD-3HL is pressing the CALL button. (The light is activated only when the unit is receiving an incoming call signal.) The LED will light regardless of the position of the Tone Off switch.
- TONE OFF SWITCH:** If the switch on the bottom of the unit is switched to the right, the call tone will be muted. If the switch is in the left position, the call tone will be heard.

TD-HL Terminal Definitions:

1~12	Selective station channels
C	Call Receive
D	Door station connection
+	Positive 12V DC
-	Negative

TONE OFF:
Left: ON
RIGHT: OFF

SPECIFICATIONS:

Power:	12V DC, provided from system power supply (PS-1225UL)
Calling:	Call tone and LED, or LED only
Call Tone:	Tremolo tone or mute with switch
Communication:	Via handset, semi-private
Wiring:	2 common + 1 wire per station on the system. 3 common with door station.
Distance:	Between TD-H stations: 2000' w/22AWG; 4800' w/18AWG DE-UR to Door: 500' w/22AWG; 1200' w/18AWG
Dimensions:	8-1/4" H x 4" W x 2-7/8" D